

SPECIFICATION

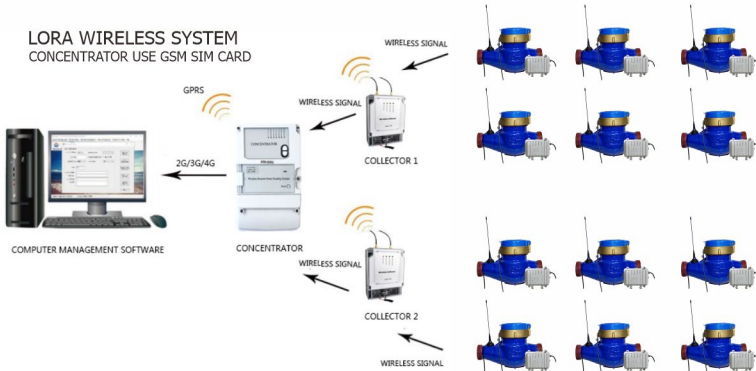
Size	DN 15 - 50
Material	Body Epoxy Coated Brass Head Plastic ABS
Temperature	Cold 0-50c
Pressure	16 Bar
Power Supply	Battery 3.6V
Output	
Protection Grade	IP 68
Connection	Flange PN 16
Accuracy	+/- 2%
Measurement Range	—
Repeatability	—
Explosion Proof	—
ISO 9001 & ISO 4064	
Warranty 2 Years (Full Service & Spare Parts)	



APPLICATION

Water

LORA WIRELESS SYSTEM
CONCENTRATOR USE GSM SIM CARD



TECHNICAL DATA

SIZE		FLOW RANGE (l/h)				DIMENSION (mm)			WEIGHT (kg)
DN (mm)	INCH	Q1	Q2	Q3	Q4	L	B	H	
DN 15	1/2"	0.03	0.12	1.5	3	165	98	116	1.65
DN 20	3/4"	0.05	0.2	2.5	5	190	98	117	1.79
DN 25	1"	0.07	0.28	3.5	7	260	103.5	124	1.85
DN 32	1 1/4"	0.12	0.48	6	12	260	103.5	124	2.68
DN 40	1 1/2"	0.2	0.8	10	20	300	125	162	5.25
DN 50	2"	0.45	3	15	30	300	125	162	7.25